

MANUFACTURER OF

1. Polygonal Poles

- a. Octagonal Poles
- b. Conical Poles
- c. Hexagonal Poles
- d. Square Pole
- e. Triangular Pole

2. Tubular Poles

- a. Swaged Pole
- b. Step Drawn Poles
- c. Platform Poles
- d. Bend Poles

3. Special Poles

- a. Mid-Hinged poles
- b. Surveillance poles
- c. Flood lighting poles
- d. Designer poles for garden/
townships / societies
- e. Solar poles
- f. Signage poles

4. High Mast

5. Accessories

- a. Bracket
- b. Foundation Bolts
- c. Junction Box
- d. Junction Box Mounting
- e. Accessories
- f. Camera Mounting Accessories
- g. Solar Mounting Accessories
- h. Gantries

MANUFACTURING PLANT:

W-5(A) MIDC, MAHAD, RAIGAD – 403609

SURVEY NO. 72, SHEDUNG- SHANGADA ROAD,
AJIVALI VILLAGE, PANVEL – 410216



OFFICE:

B-2/111 K L HOUSE, RAJAWADI CHS,
CHITRANJAN NAGAR,
GHATKOPAR EAST, MUMBAI – 400077

WEBSITE:

KLINDUSTRIES.IN

kli@live.in



+91 9137 696 739

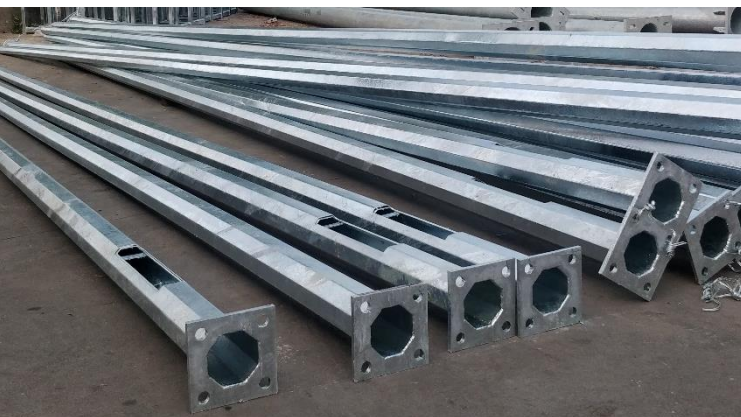
+91 222 5086 384

+91 222 5086 112



K L INDUSTRIES®

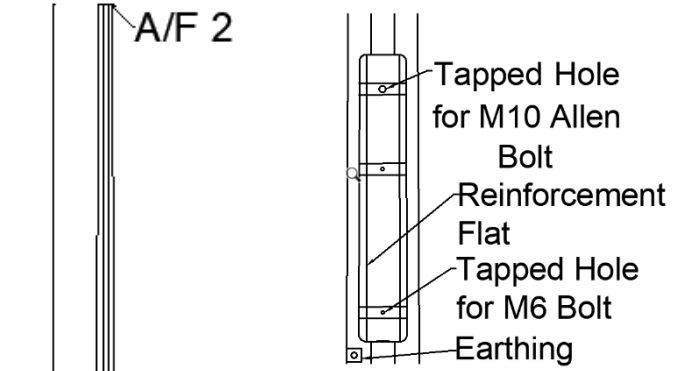
POLYGONAL POLES



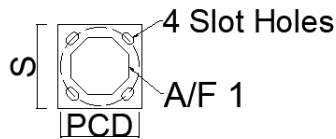
- ∴ K L Industries manufactures various types of Octagonal, Conical and Tubular Poles in its plant
- ∴ Poles are offered from 3 meters up to 14.5 meters as per the requirement, material thickness offered is 3 to 6 MM as per customers specification and design
- ∴ The shaft is in one piece SAW welded after cutting it on high-speed CNC plasma Machine and bending of hydraulic press
- ∴ Poles are provided with marauder resistant and flush finish with ease access and water resistant



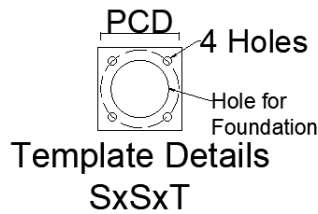
HEIGHT H (M)	BOTTOM DIA A/F 1 (MM)	TOP DIA A/F 2 (MM)	THICKNESS T (MM)	BASE PLATE SXSXT (MM)	BOLT SPECIFICATION (MM)	FOUNDATION DETAILS	
						PCD (MM)	THREAD LENGTH (MM)
3	70	130	3 / 4	200x200x12	16x450	200	80
4	70	130	3 / 4	200x200x12	16x450	200	80
5	70	130	3 / 4	200x200x12	16x600	200	80
6	70	130	3 / 4	200x200x12	20x600	200	100
7	70	130	3 / 4	220x220x12	20x700	205	100
8	70	135	3 / 4	225x225x16	20x750	210	100
9	70	155	3 / 4	260x260x16	24x750	250	125
9	100	200	3 / 4	300x300x16	24x750	300	125
10	70	175	3 / 4	275x275x16	24x750	270	125
11	90	210	3 / 4	300x300x20	24x750	300	125
12	90	240	3 / 4	320x320x20	24x850	325	125



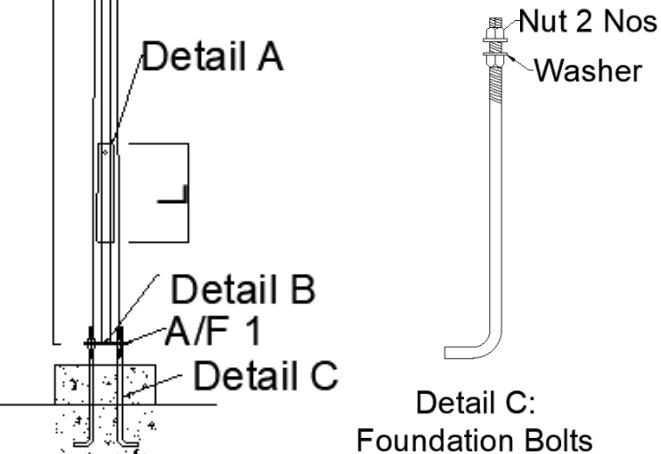
Detail A: Internal Junction box



Detail B:
Base Plate Detail
SxSxT



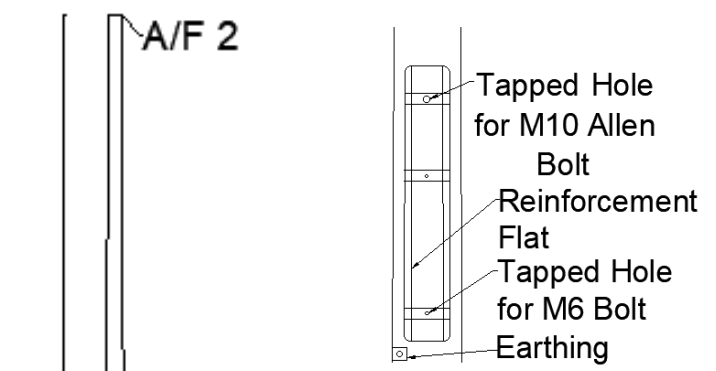
Template Details
SxSxT



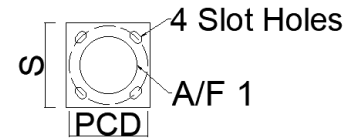
Detail C:
Foundation Bolts

STANDARD FEATURES

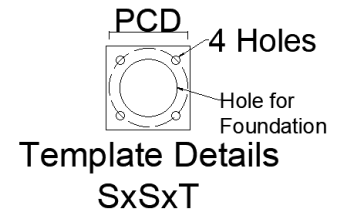
- ∴ Made of High Tensile Strength MS Sheet.
- ∴ MS sheet is cut on high speed CNC plasma cutting machine
- ∴ Automated SAW welded Shaft
- ∴ Modern Inbuilt Junction Box
- ∴ Poles are available with various types brackets
- ∴ Rust proof, Poles are hot dip galvanized by 7 tank process
- ∴ PU painted poles are also available on request
- ∴ Template is provided as per PCD of the base plate for hassle free foundation
- ∴ Slots provided on the base plate for ease of erection on foundation bolts
- ∴ Poles are designed with international standards to withstand wind speed up to 180kmph
- ∴ Easy to replace



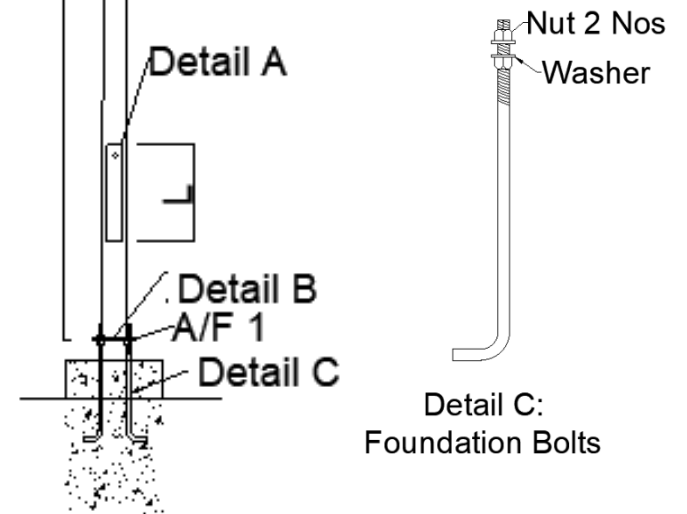
Detail A: Internal Junction box



Detail B:
Base Plate Detail
SxSxT



Template Details
SxSxT



Detail C:
Foundation Bolts