

# MANUFACTURER OF

## 1. Polygonal Poles

- a. Octagonal Poles
- b. Conical Poles
- c. Hexagonal Poles
- d. Square Pole
- e. Triangular Pole

## 2. Tubular Poles

- a. Swaged Pole
- b. Step Drawn Poles
- c. Platform Poles
- d. Bend Poles

## 3. Special Poles

- a. Mid-Hinged poles
- b. Surveillance poles
- c. Flood lighting poles
- d. Designer poles for garden/  
townships / societies
- e. Solar poles
- f. Signage poles

## 4. High Mast

## 5. Accessories

- a. Bracket
- b. Foundation Bolts
- c. Junction Box
- d. Junction Box Mounting
- e. Accessories
- f. Camera Mounting Accessories
- g. Solar Mounting Accessories
- h. Gantries

### MANUFACTURING PLANT:

W-5(A) MIDC, MAHAD, RAIGAD – 403609

SURVEY NO. 72, SHEDUNG- SHANGADA ROAD,



AJIVALI VILLAGE, PANVEL – 410216

### OFFICE:

B-2/111 K L HOUSE, RAJAWADI CHS,  
CHITRANJAN NAGAR,  
GHATKOPAR EAST, MUMBAI – 400077

### WEBSITE:

[KLINDUSTRIES.IN](http://KLINDUSTRIES.IN)

[kli@live.in](mailto:kli@live.in)



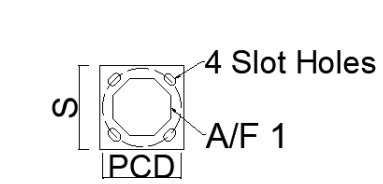
+91 9137 696 739

+91 222 5086 384

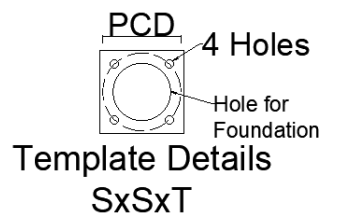
+91 222 5086 112



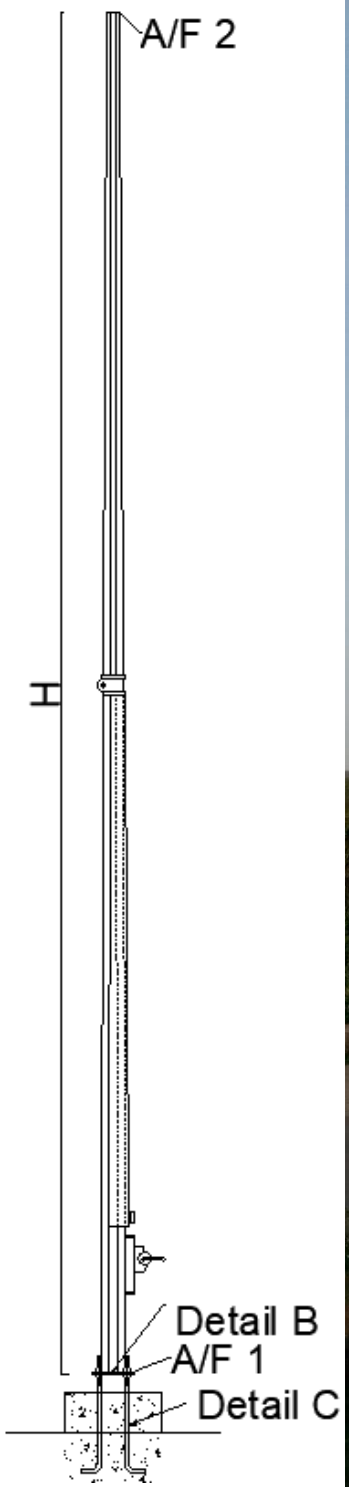
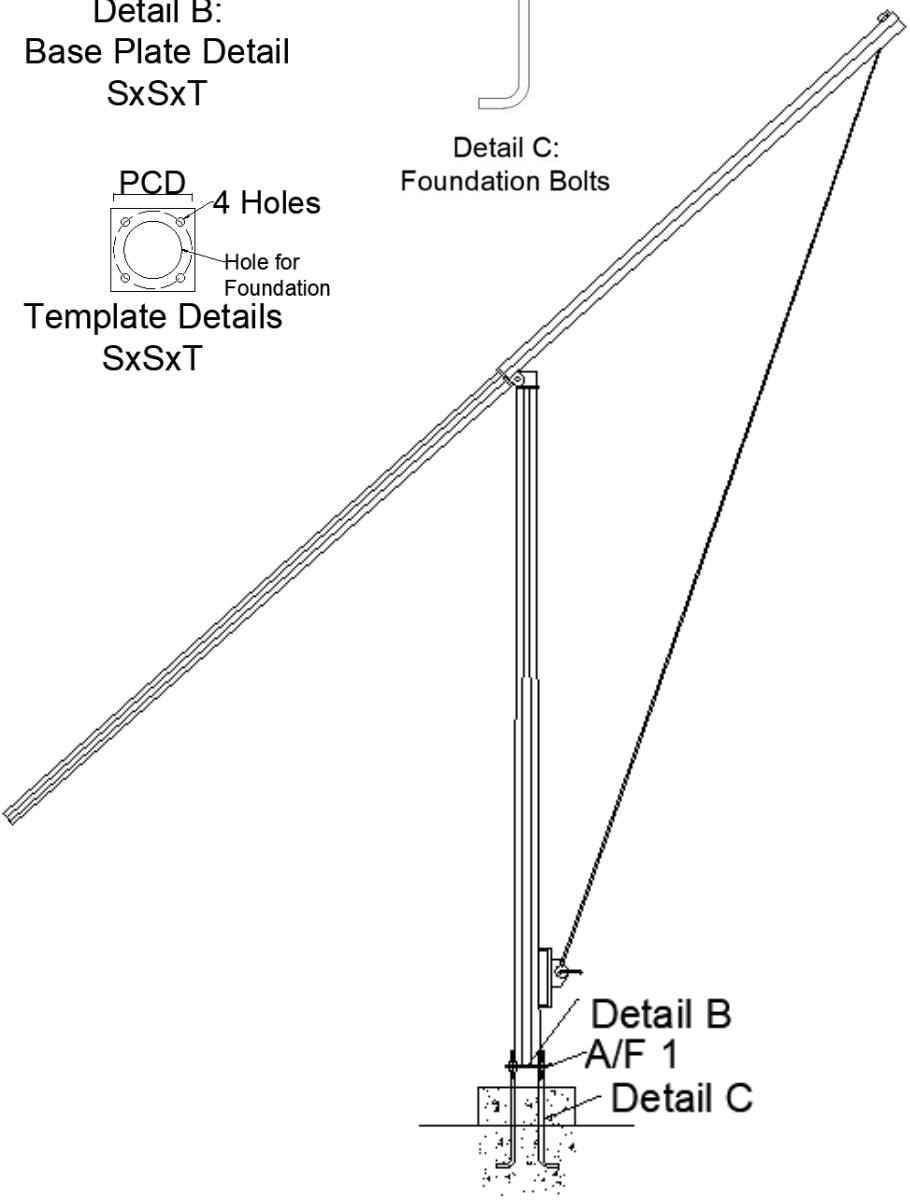
**K L INDUSTRIES®**



Detail B:  
Base Plate Detail  
SxSxT



Detail C:  
Foundation Bolts



# *SPECIAL POLES*

## *MID HINGED POLES*

### STANDARD FEATURES

- ∴ Made of High Tensile Strength MS Sheet.
- ∴ MS sheet is cut on high speed CNC plasma cutting machine
- ∴ Automated SAW welded Shaft
- ∴ Modern Inbuilt Junction Box
- ∴ Rust proof, Poles are hot dip galvanized by 7 tank process
- ∴ PU painted poles are also available on request
- ∴ Variety of decorative brackets are available
- ∴ Our R&D team can provide you design for special utility purposes
- ∴ Accessories are made for Camera mounting with clamps as per camera's design
- ∴ Solar panel fixtures are specially designed and manufactured as per the size of the solar panel
- ∴ Template is provided as per PCD of the base plate for hassle free foundation
- ∴ Slots provided on the base plate for ease of erection on foundation bolts
- ∴ Poles are designed with international standards to withstand wind speed up to 180kmph
- ∴ Easy to replace

---

*DECORATIVE POLES*



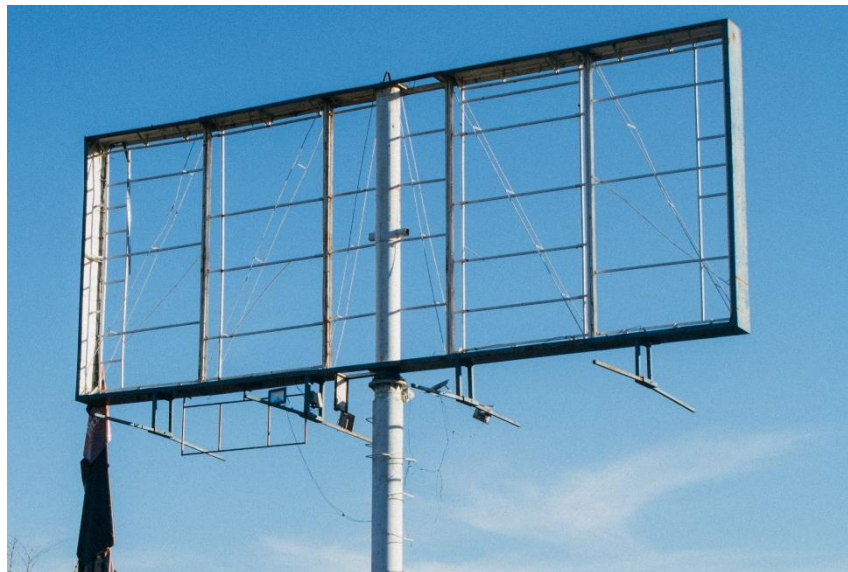
---

*SOLAR POLES*



---

*SIGNAGE POLES*



---

*SURVEILLANCE POLES*

